

Sample of a diploma created with Excentro

Excentro comes in two versions

Excentro is available in two versions made for different user groups with different feature sets and price preferences:

■ **Excentro**, or the full application version, is geared to professional graphic artists who make designs for security papers, certificates, packaging or even plastic cards. This version has all the features mentioned in this leaflet.

■ **Excentro Lite** is a simplified version with the features set close to the original Excentro from mid 90's. It has a very affordable price point and is made for the users who need to create designs for occasional jobs or just to do some guilloché experiments.



Excentro system requirements

Apple Macintosh with Mac OS X version 10.4 or 10.5.

More information

Excentro web-page is located on Excource web-site:

<http://www.excource.com/excentro/>

On this web-page you will find all the news about Excentro development, the user guide and other reference documentation in PDF format.

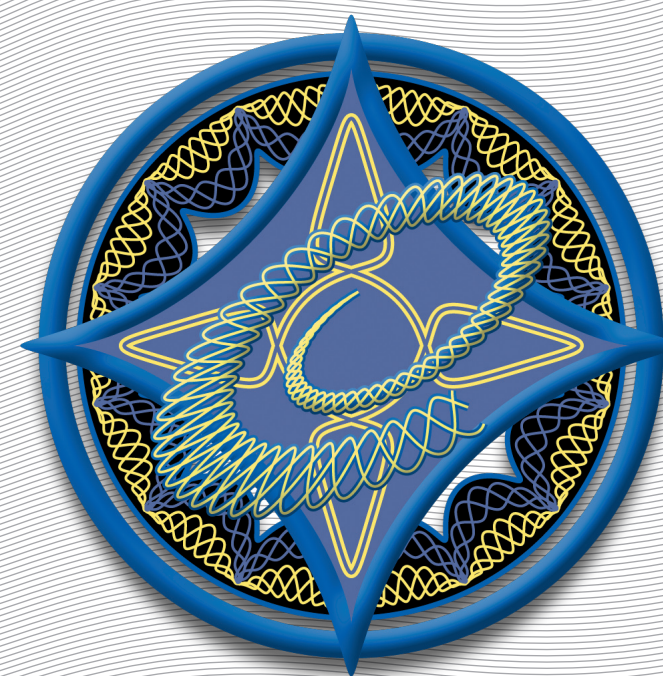
To get more information about Excentro and other software products from Excource, please contact us:

E-mail: info@excource.com

Phone: +7 495 7256001, Fax: +7 495 7256003

Postal address: Kursiv Publishers, P.O. Box Kursiv, Moscow 107140, Russia

Street address: Elektrozavodskaya street 37/4, bldg. 7, Moscow 107076, Russia



Excentro

Create backgrounds,
borders, rosettes and
other guilloché designs
on your Mac with
Excource Excentro...

Software development projects by
Kursiv Publishing House

EXCOURSE



Excentro is a simple but advanced tool that can create guilloche designs like backgrounds, borders or rosettes.

The guilloches are vintage design elements that were frequently used for anti-counterfeiting security purposes on banknotes, passports, checks and certificates during the past two hundred years. As the times changed and digital copy and printing technologies perfected, guilloches no longer presented sufficient security measures that could prevent forging and counterfeiting of valuable papers. Today the main part of security technology lies in the special paper or tricky inks the designs are printed upon or with.

Still, it is too early to say that the days of guilloche designs are over. They can still be used to prevent the counterfeiting of products that do not require the highest level of security (i.e. theater tickets, diplomas or gift certificates). Or, they can just be used to decorate and add some aesthetic value to a product giving the "money-like" look and value.

Excentro Features

1. Excentro interface

Each document in Excentro has three distinct areas to display: "Preview", "Structure" and "Layers".

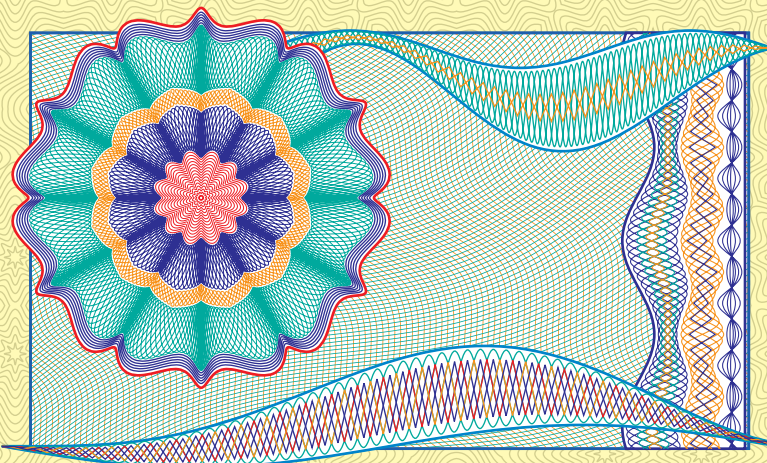
"Preview" and "Layers" are similar to the windows of other graphic design applications: "Preview" displays guilloche graphics with the magnifications specified, "Layers" shows back-to-front order of paths and allows the designer to arrange which objects are below or above.

The "Structure" area is the key highlight of Excentro. It illustrates the process of guilloche construction with graphic objects presented as interconnected "bases" and "elements".

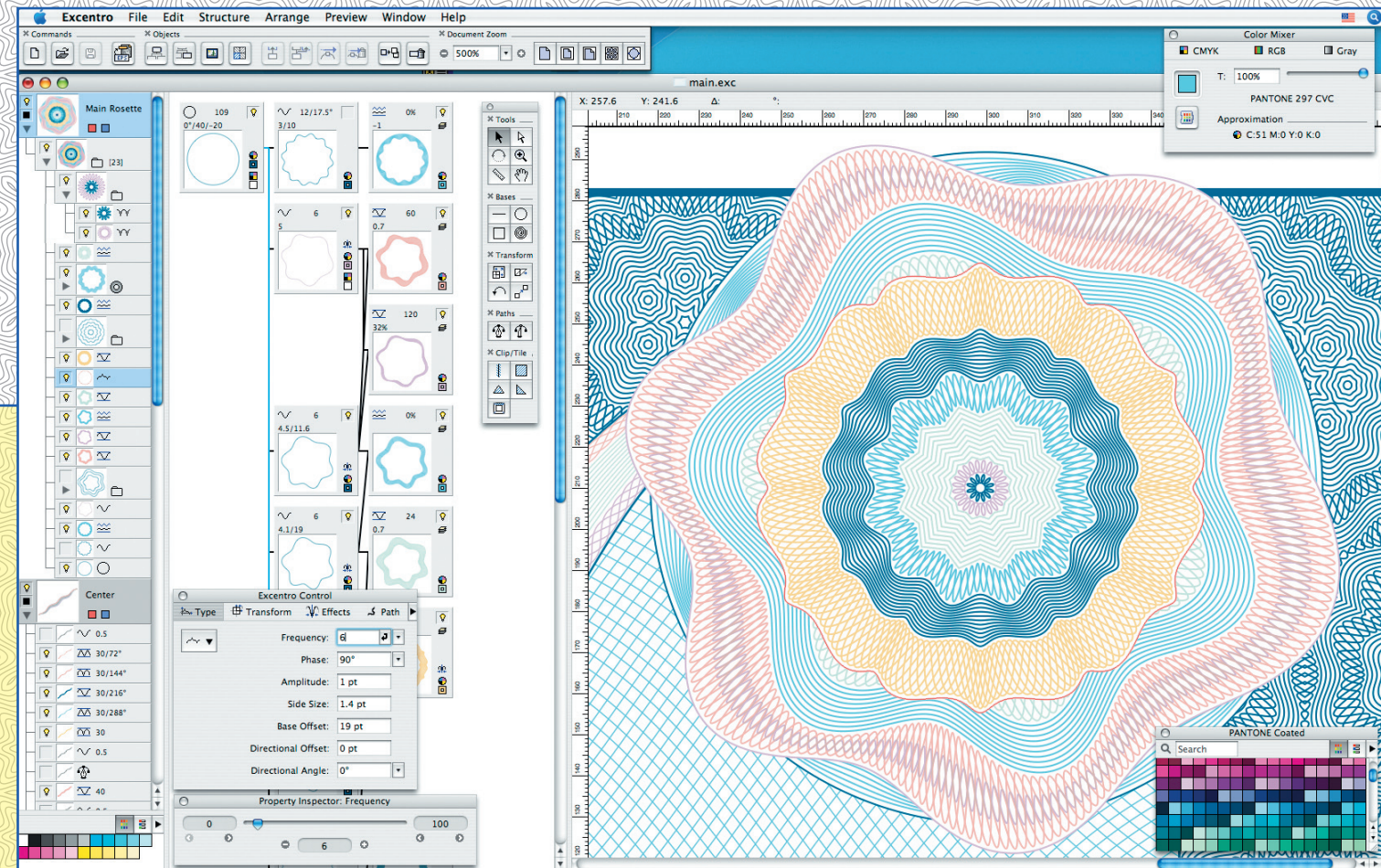
2. Fast guilloche creation

With Excentro you can create all popular kind of guilloches: backgrounds, bands, frames, rosettes. The underlying principle is similar to that of mechanical guilloche machines from the past and is based on the "movement" of drawing an "object" over a path created in a similar way in previous steps.

Using Excentro requires some hands-on learning and browsing through the user guide and other reference materials. After becoming familiar with Excentro you will find it quite easy and even fun to work with...



Guilloches made on a Mac

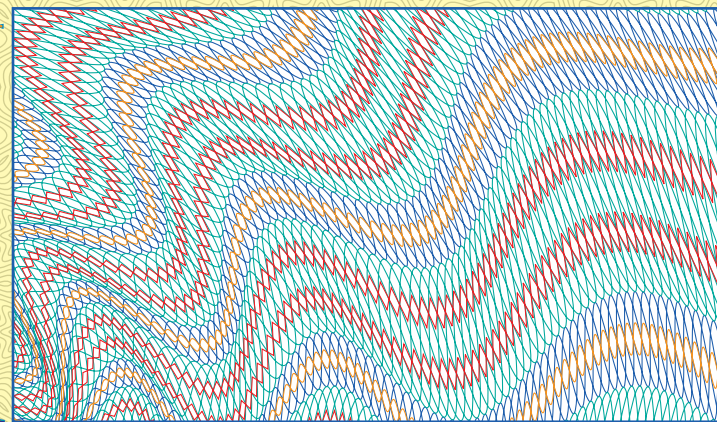


Excentro screenshot

3. Versatile step & repeat sets

Excentro allows you to duplicate its graphic objects any number of times with the individual attributes of the objects modified by user defined values.

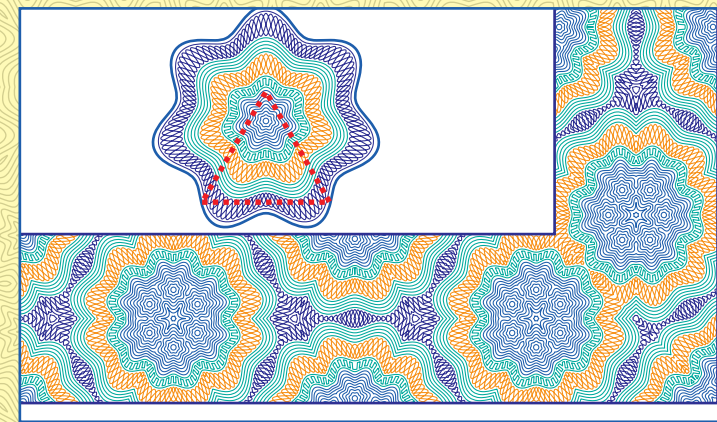
With this "Step & Repeat" feature, you can create intricate guilloche designs in almost no time with few mouse clicks and keystrokes. If the design needs to be modified or reworked later, you can just change several attributes of existing objects and their "Step & Repeat" sets to get a design that looks different.



4. Automatic frames and tiles

Excentro can cut a part of the existing design, then reflect and repeat this part to create complex borders or backgrounds with symmetrical patterns. You can even automatically create a complete rectangular frame for a certificate or diploma in this way.

Adjacent path segments and corners are accurately joined and stitched together to create continuous paths without overlapping line caps. This feature can also be used to crop a background or a border to certain area.

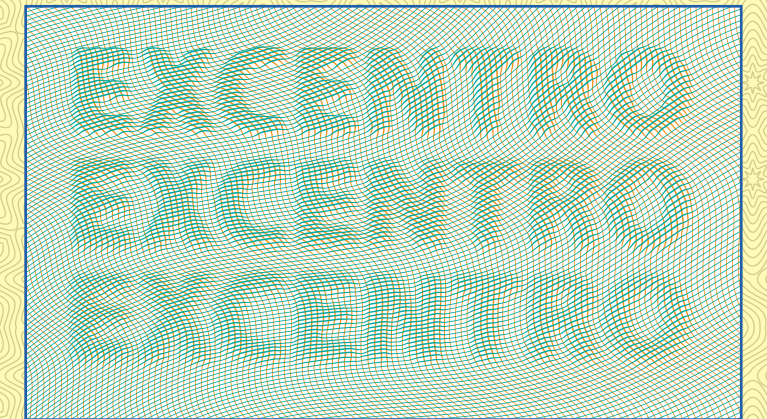


Excentro was originally started in the early 90's as a solution for the emerging Russian security printing market. New promising economy situations asked for a simple, yet not very expensive solution that runs on an industry standard graphic arts platform and can produce the sort of patterns similar to what could be done on mechanical guilloche devices employed by government banknote printing plants. Since then it went through several major updates and features overhauls...

5. Stroke width modulation & reliefs

The stroke width of background paths can be changed by either modulation settings specified by the user or by the pixel value of the underlying grayscale image. In the similar way portions of paths located over non-white areas of the underlying image can be offset to create bas-relief like effects.

Any graphics file in common image formats (raster TIFF or vector PDF) can be imported into an Excentro document to be used with this feature. You can even apply Step & Repeat sets to the images to vary its position, size, brightness or contrast.



6. Export after you finished

When a guilloche work in Excentro is over you can export the finished design in generic PDF, Adobe Illustrator format or create a preview in TIFF, JPEG or PNG.

A PDF file can be directly printed or placed into a page layout application. An Illustrator file can be opened in the Adobe Illustrator application to add some effects. Excentro layers and document settings are fully transferred to this format. Preview image files can be sent to customers for design approval or placed into web pages.

